



CELLAR FLOOR PLAN

CAR PARKING DETAILS

| TYPE | SIZE | CELLAR FLOOR | | SUB CELLAR FLOOR | | TOTAL |
|------------|------------|--------------|----------|------------------|----------|---------|
| | | DIRECT | INDIRECT | DIRECT | INDIRECT | |
| SMALL CARS | 8'0"X12'6" | 3 NO'S | --- | 2 NO'S | --- | 5 NO'S |
| BIG CARS | 8'0"X16'0" | 22 NO'S | 09 NO'S | 23 NO'S | 13 NO'S | 67 NO'S |



SUB CELLAR FLOOR PLAN



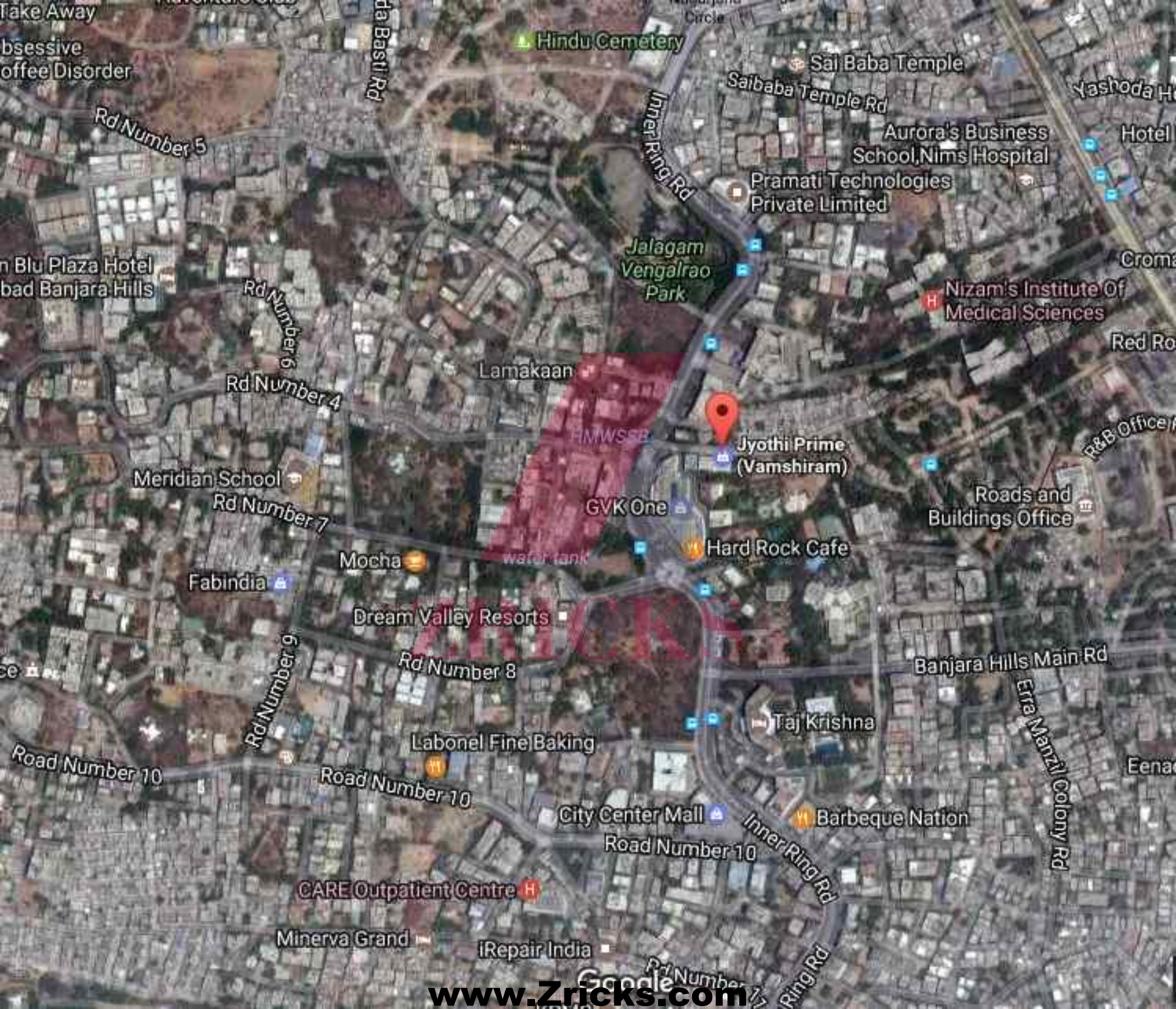
SPECIFICATIONS & AMENITIES

| | |
|----------------------------|---|
| STRUCTURE | R.C.C frame structure,Structurally sound and designed with adequate safety measure for Earth quake proof. |
| DOORS&WINDOWS | Aluminium frames with glass doors, Aluminium glazed glass windows. |
| FLOORING | 2' X 2' Vetrified tiles will be provided for entire office space Granite Flooring will be given for Staircase & Corridors. |
| WALLS AND FINISHING | Brick work in cement mortar with sponge finish outside and lappam finish inside. Exterior textured finish with glass & ACP Cladding combination. Interior painting with plastic emulsion for all the rooms. |
| COMMON TOILETS | Anti-skid tiles flooring and matching dado in ceramic tiles. |
| LIFT | High Speed Automatic lift(Schiendler/Johnson Lifts). |
| ELECTRIFICATION | Three phase electrical point from meter to each floor of the office space. |
| ELEVATION | Exclusive most mod elevation. |
| CAR PARKING | VDF Flooring |
| GENERATOR | Stand Bye Generator of adequate capacity for common area, Lifts & pumps. |

LOCATION MAP

(Not to scale)





Hindu Cemetery

Sai Baba Temple

Saibaba Temple Rd

Aurora's Business School, Nims Hospital

Pramati Technologies Private Limited

Jalagam Vengalrao Park

Nizam's Institute Of Medical Sciences

Lamakaan

Jyothi Prime (Vamshiram)

GVK One

Hard Rock Cafe

Meridian School

Fabindia

Mocha

Dream Valley Resorts

Rd Number 8

Labonel Fine Baking

Taj Krishna

Banjara Hills Main Rd

Erra Manzil Colony Rd

City Center Mall

Barbeque Nation

CARE Outpatient Centre

Minerva Grand

iRepair India

www.Zricks.com